

FLEXSTAND Operator Interface

Design Concept

Prototype verification

Deploy Production

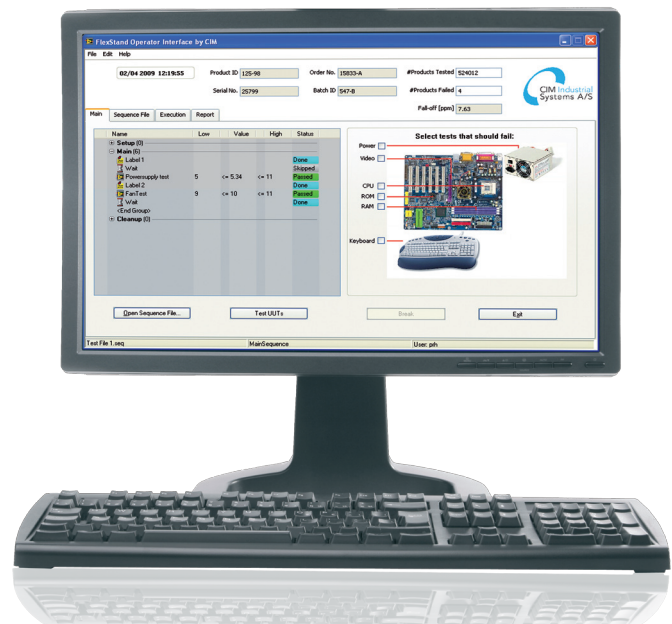
IF YOU THINK TESTING TAKES TIMES, SPEED UP AND FACE THE FACTS ...

People often think that testing is time consuming and expensive. But with FlexStand Operator Interface, it is now possible to reduce testing time, even if conditions change during the process.

Looking for a flexible and easy to use testing solution? Your search is over! The flexible TestStand interface significantly reduces the development time of operator interfaces. Only basic LabView and TestStand skills are required.

By using FlexStand, you can create simple or advanced operator interfaces for TestStand using only basic LabView programming. A specially designed interface (API) hides all the complex TestStand properties and methods that usually make the task of creating operator interfaces difficult. FlexStand fully integrates into the LabView development environment, including a tools palette and examples.

FlexStand allows you to create dynamic operator interfaces that fit the tasks for the device to be tested. The operator interface can even be changed during the test, e.g. when a barcode is scanned. A number of tabs can be changed automatically or in user control so the operator receives the desired amount of information based on the specific situation.



Simplify your test process by using FlexStand Operator Interface

Out of the box, Operator Interface for TestStand, based on experience

Flexible - one API for all testers

Encapsulation of TestStand API into LabView Vis

www.flexstand.eu

www.cim.as

As the [FlexStand Operator Interface](#) automatically adjusts to fit the size of the LabView front panels, the programmer has full control over the overall layout. This allows the programmer to allocate more or less space depending on the amount of information required.

Want a flexible high performance tool for your test lab? Please call us today and let us demonstrate the functions and features of this outstanding Application Programming Interface created for multiple testers around the world.

Or find more information at www.flexstand.eu.

CIM Industrial Systems A/S

Europe's leading developer
in LabView and TestStand



Pending National Instruments® Certification

Innovation is a state of mind!

At CIM Industrial Systems, we have proven that extensive innovation makes the difference when developing software with our partners, Microsoft and National Instruments.

We are a team of qualified consultants, who are dedicated to creating the best solution for your product or production.

CIM is a Microsoft Partner, certified to develop software for PC, PDA and embedded platforms using C, C++, C# and .Net.

CIM is the leading LabView and Teststand software company in Europe and is a member of the National Instruments Alliance program.

Software Architect certified at the highest level by National Instruments - we are at your service.

www.cim.as



Kildegården 4, 7600 Struer | Jegstrupvej 96 a, 8361 Hasselager | Agern Allé 3, 2970 Hørsholm | Denmark | Tel. +45 96 84 05 00 | info@cim.as